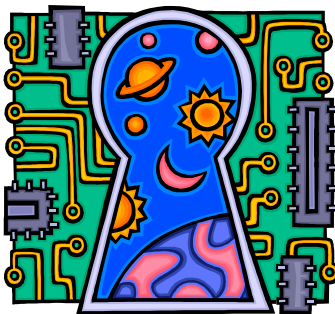


Getting to the Core

English Language Arts
Grade 11 Unit of Study

“Do I Dare?”



Final Revision: April 4, 2014

ADDITIONAL TEACHER RESOURCES

Allusions and Vocabulary in “The Love Song of J. Alfred Prufrock”

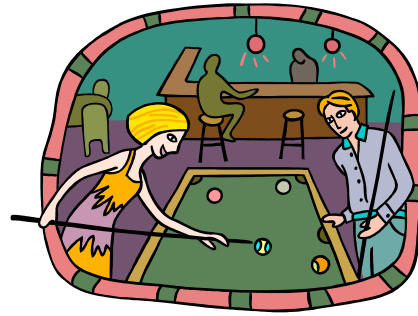
Directions: Before class, cut into two sets of cards: words/phrases and meanings.

<p style="text-align: center;">Etherized</p> <p style="text-align: center;">“Like a patient etherized upon a table”</p> <p style="text-align: center;">--Line 3</p>	<p>Means to be anesthetized or made numb using ether. It also has a double meaning which could mean "ethereal", made less real.</p> 
<p style="text-align: center;">yellow fog</p> <p style="text-align: center;">--Lines 15-25</p>	<p>The haze is like a quiet, timid cat padding to and fro, rubbing its head on objects, licking its tongue, and curling up to sleep after allowing soot to fall upon it. The speaker resembles the cat as he looks into windows or into "the room," trying to decide whether to enter and become part of the activity. Eventually, he curls up in the safety and security of his own soft arms.</p> 
<p style="text-align: center;">head brought in upon a platter</p> <p style="text-align: center;">--Lines 81-82</p>	<p>This is an allusion (reference) to a biblical story about John the Baptist, a Jewish prophet of the First Century AD, who was beheaded by Herod Antipas for condemning Herod’s marriage. John was cousin to Jesus.</p>

Sawdust restaurants

--Line 7

Refers to cheap bars and restaurants which would put sawdust on the floor in order to soak up spilled liquids such as beer.



“In the room the women
come and go / Talking of
Michelangelo.”

--Lines 13-14 and 35-36

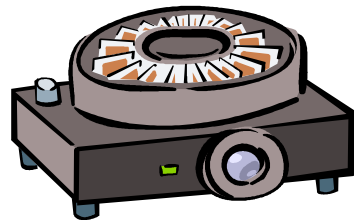
At a social gathering in a room, women discuss the great Renaissance artist Michelangelo. The Italian artist painted the Sistine Chapel and created works such as La Pieta and David (below).



magic lantern

--Line 105

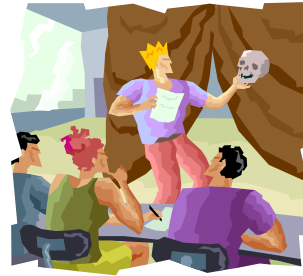
The name for an early type of picture projector,
not a genie's lamp.



Prince Hamlet

--Line 111

This character is from William Shakespeare play of the same name. When he learned that his uncle had killed his father, this tragic hero had great difficulty deciding how to react.



“I do not think that they will sing to me.”

--Line 125

This phrase probably sums up J. Alfred Prufrock’s romantic frustration as a middle-aged man. He has wanted to show his interest in his woman earlier in this poem (note when he describes her perfume and dress) but believes that women have no interest in him; that is, the mermaids will not sing to him.



Lazarus

--Line 94

This refers to a biblical character who was raised from the dead.

“I should have been a pair
of ragged claws /
Scuttling across the floors
of silent seas.”

--Lines 73-74

Here Prufrock imagines being a crab at the bottom
of the ocean.

